

# Closure Sale

# Paper Mill

Following the closure sale of Sappi Lanaken, UTB has acquired all real estate, machinery and equipment which we are now offering for sale.



Paper Machines



CTMP Pulp Mill



Sheeting Installation



Auxiliary Equipment





## VALMET 7500 mm



### Paper Production Line, VALMET rebuild 2019

- MC & WFC Grades
- Grammage: 35 – 170 gr/m<sup>2</sup>
- Capacity: max ~ 350000 T/pa
- Width: 7.5 m
- Speed: max 1400 m/min

### Description

Paper production line consisting of stock preparation, paper machine, inline coaters, calender, reeler, offline calender, slitter winders and roll wrapping. Fully upgraded by Valmet in 2019, including formmaster, topformer, shoe-press, pre-dryer section, sizer, inline coating and drying, inline multipin calender and reeler.



## BELOIT 4800 mm



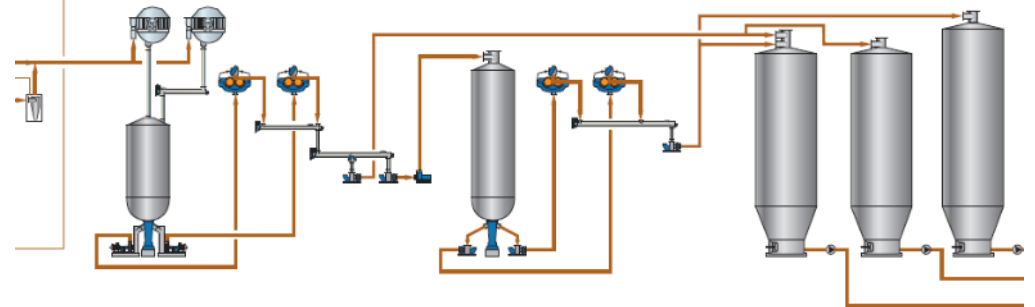
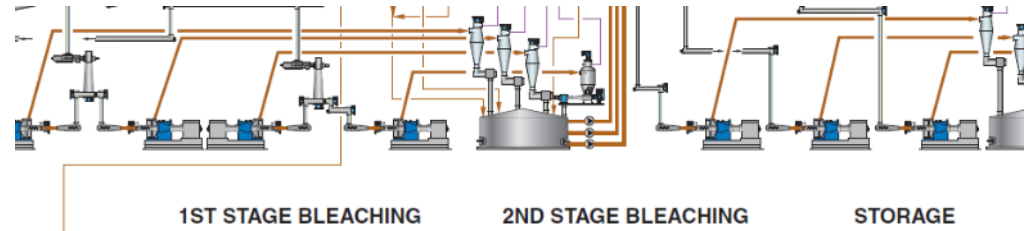
### Paper Production Line 4.8m including off-coater

- MC & WFC Grades
- Grammage: 40 – 170 gr/m<sup>2</sup>
- Capacity: max ~ 240000 T/yr
- Width: 4.8 m
- Speed: max 1165 m/min

### Description

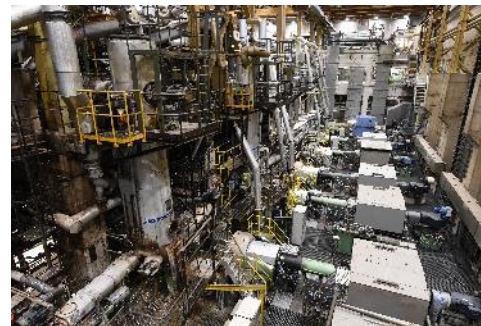
Paper production line consisting of stock preparation, paper machine, inline coaters, offline coater, calender, reeler, offline calenders and slitter winders. Various updates including headbox, top former, press section, offline coater, Voith speedsizer, Voith jet coaters and steambox & ceramic rolls.





## Description

Complete CTMP plant with a capacity of 170000 tpa.  
The complete process consists of washing units, impregnation equipment, two stage refining, screening and two stage bleaching.





## Maruishi Sheeters & Pallet Wrapping



### Description

- Complete sheeting installation (YOM 2019)
- 3 Maruishi high speed sheeters
- Roll input conveyor system, including buffer zone
- Core return conveyor system
- Empty pallet input system, robotised
- Pallet output conveyor system
- Sheet counting and marking system, robotised
- Pallet wrapping installation

### Characteristics – per sheeter Maruishi High Speed Model 2200

- Speed: 350 m/min
- Cuttings: 500 per min
- Unwinding: 8 stations
- Slitting capacity: 805 gsm

### Characteristics – pallet wrapping Reker SK2755

- Heating: Electric 240 kW
- Temperature: max. 240 °C
- Capacity (double): 120 pallets/hour
- Capacity (single): 80 pallets/hour



# Auxiliary equipment

Automatic Reel Storage 10.000 T



Automatic Reel Storage 10.000 T



Biogas Generator



Boilers



Slitter – Jagenberg Vari-Plus 5100 mm



Slitter – Jagenberg Vari-Flex 5100 mm



Slitter – Jagenberg Vari-Top 3100 mm



Slitter – Jagenberg Vari-Top 7500 mm



# Auxiliary equipment

Invent Air Blowers



Aerzen Rotary Lobe Compressor



Atlas Copco Drum Dryer



Atlas Copco Dryer



Broke Pulpers



Cooling Tower



Guillotine – Baumann Wohlenberg



Guillotine – Baumann Wohlenberg





# Auxiliary equipment

Roll Grinding Machine 13m



Lathe 11 m



Overhead Cranes



Fire Station Engines



Transformers



Energy Equipment



Components



Components







## ABOUT SAPPI

Sappi (South African Pulp and Paper Industries) is a global provider of pulp and paper. Sappi Lanaken Mill form part of Sappi Europe which produces coated graphic papers as well as packaging and speciality papers.

The Sappi Lanaken Mill is located on the Albert Canal in the north-East of Belgium. It has an integrated pulp and paper mill. The mill produced various kinds of coated fine papers on its PM7 and PM8 machines as well as chemi-thermomechanical pulp (CTMP).

The closure of the Sappi Lanaken Mill was part of a European consolidation process. In the meantime, Sappi has transferred the production to other Sappi facilities.

[www.sappi.com](http://www.sappi.com)



## ABOUT UTB INDUSTRIAL ACQUISITIONS

UTB Industrial Acquisitions specialises in the acquisition of industrial assets and real estate in case of global consolidation, factory or business closure.

For every situation of consolidation or closure , UTB offers tailor-made solutions in often complex processes.

UTB is mainly active in automotive, chemical, plastic, packaging and paper industries.

To see the projects we have executed please visit our website

[www.utb.eu](http://www.utb.eu)

In case you are interested in any of the machinery shown in this brochure, please feel free to contact us: [info@utb.eu](mailto:info@utb.eu).

## UTB INDUSTRIAL ACQUISITIONS

Veerweg 14  
5145 NS Waalwijk  
The Netherlands

T +31 [0]416 333 368

E [info@utb.eu](mailto:info@utb.eu)